



TEXT PLEDGE

RISE UP

ACTIVITY BOOK

**PROTECT
THE ENVIRONMENT
GRADES 2 - 4**



NAME: _____

ABOUT TEXT PLEDGE

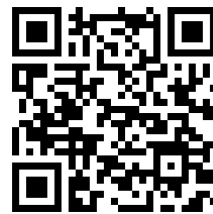


Text Pledge is a nonprofit in Greater Grand Rapids, MI, that seeks to change the world one pledge at a time. Our pledges focus on ending some of the worst social issues affecting our communities, from distracted driving to acts of violence. Each pledge challenges members to practice compassion, and speak up when they witness injustice. We encourage you to help others in times of crisis. Together, we can make the world a kinder place.

Our pledge program includes the following elements available on our website www.textpledge.us and the Text Pledge App available on iOS/Google Play.

NATIONAL SMART CARD

EMERGENCY HOTLINES
AND RESOURCES



FREE
DOWNLOAD

NATIONAL STATISTICS

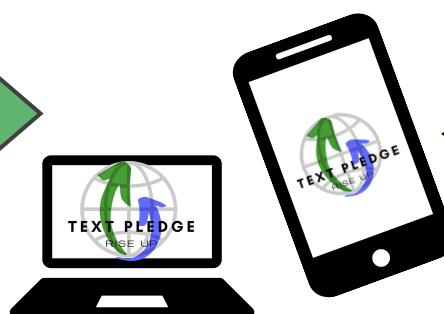
UPDATED MONTHLY
TO REFLECT THE IMPACT OF
EACH PLEDGE TOPIC IN OUR
WORLD



VISIT OUR
WEBSITE

EDUCATION PROGRAMS

ACTIVITY BOOKS
FOR AGES KINDERGARTEN
THROUGH GRADE TWELVE.
AVAILABLE ON THE TEXT PLEDGE
WEBSITE AND THE MOBILE APP.



DOWNLOAD
OUR
MOBILE APP

WWW.TEXTPLEDGE.US





A Message From Our Founder

Greetings friends,

We are here to raise awareness of protecting the environment. Preserving the earth should be urgent for every living person. Taking care of the environment is like taking care of our home—the big home we all share, called Earth! We want to keep it clean and healthy so that we can enjoy the fresh air, clean water, and beautiful nature around us. Imagine a world where the trees are always green, the oceans are full of fish, and the sky is clear and bright. That's the kind of world we want for ourselves and for the future. In this lesson you will learn how to reduce, reuse and recycle properly. Additionally, you will take a closer look at your own habits. Every little thing we do adds up to make a big difference.

Visit us at TextPledge.us and share with us what you're doing to make the environment a better place in your community.

Happy Learning!



Ms. Naomi
Founder at the TextPledge Project



WHAT IS ENVIRONMENTAL PROTECTION?

Environmental protection involves **safeguarding and preserving the natural world and its resources**. The goal is to maintain a healthy and balanced environment for current and future generations to enjoy. Match each image to the description to identify actions that help protect the environment.



Conserve Resources

Planting Trees



Pick up Trash

Recycling



Reusing

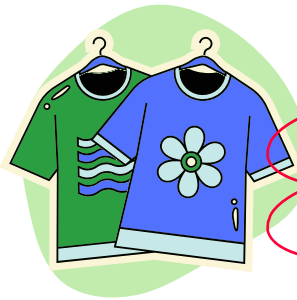
Reduce transportation emissions



Reduce, Reuse, Recycle

SORTING CHALLENGE

One of the most basic things we can do to help protect the planet is to reduce, reuse and recycle. Look at the items below and decide which step(s) you would take to make a positive impact.



Reduce

Reuse

Recycle



Reduce

Reuse

Recycle



Reduce

Reuse

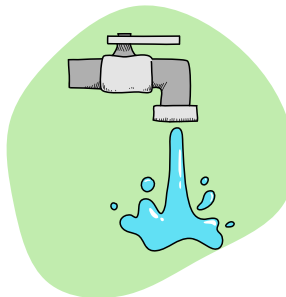
Recycle



Reduce

Reuse

Recycle



Reduce

Reuse

Recycle



Reduce

Reuse

Recycle



Reduce

Reuse

Recycle



Reduce

Reuse

Recycle



Go Green

WORD SEARCH

Find and circle the words in the word bank.

-  RECYCLE
-  REUSE
-  TRASH
-  PLASTIC
-  PAPER
-  WATER
-  COMPOST
-  POLLUTION
-  ENERGY
-  NATURE
-  OCEAN
-  TREE
-  REDUCE
-  RENEWABLE
-  WILDLIFE
-  CLEAN
-  CONSERVATION

A	O	C	E	A	N	L	I	D	Z
B	T	Y	F	B	D	A	T	Y	N
G	D	N	T	D	T	R	A	S	H
W	I	L	D	L	I	F	E	F	Q
M	P	A	C	L	E	A	N	J	K
B	O	E	R	A	W	A	T	E	R
C	Z	R	P	L	A	S	T	I	C
Y	H	J	S	R	E	U	S	E	N
P	A	P	E	R	F	E	C	G	J
K	O	V	R	E	C	Y	C	L	E
N	A	T	U	R	E	U	S	E	N
P	C	O	M	P	O	S	T	G	J
R	E	D	U	C	E	Y	G	L	T
N	M	Q	T	R	E	E	B	P	K
P	O	L	L	U	T	I	O	N	H
Q	R	E	N	E	W	A	B	L	E
K	Z	E	N	E	R	G	Y	H	V

Fill in the Blanks

GREEN VOCABULARY

Fill in the blanks with the correct words from the list to complete the sentences.

Word list

air

trees

oceans

loud

creatures

wasteful

pollution

1. Using too much water is

2. It is important to plant more to keep our air clean and fresh.

3. Walking or biking instead of using a car helps to reduce

4. Noise pollution is caused by music and honking horns.

5. Water pollution affects our and

the that live in them.

STOP POLLUTION

Read the paragraph and find answers to the questions.

Environmental Pollution

Environmental pollution is when our Earth becomes dirty and unhealthy. Pollution is dangerous for humans, animals, and plants. There are three main types of pollution: air pollution, water pollution, and land pollution.

Air pollution happens when the air we breathe is not clean, often because of smoke or chemicals. **Water pollution** occurs when our rivers, lakes, and oceans get dirty, making it hard for plants and animals to live there. **Land pollution** is when our land gets covered in trash and chemicals. Pollution is often caused by humans, but we can help keep our planet clean and safe!

We can throw our trash in the bins and not litter. We should use less plastic and recycle things like bottles and paper. Turning off lights when we're not using them helps save energy too. Planting trees and taking care of plants and animals is also important. Let's work together to make our Earth a happy and clean home for everyone!

What are the three main types of pollution?

MATCH IT UP

Draw a line to match the words in column A with the words in column B.

A

Air Pollution

Turning off lights
when they're not
needed

Throwing trash in
the bins

Land Pollution

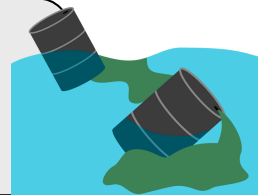
Water Pollution

B

Releasing carbon gases
into the air can cause



Water in our rivers and
oceans that are
contaminated with trash
and oil can cause



The soil in the ground is
contaminated with trash
and chemicals, which
can cause



Helps to reduce waste
and keeps the
environment clean.



Helps save energy and
benefits our Earth



ENERGY SAVING ADVENTURE!

Emma, Ethan, and Olivia are individually participating in an energy-saving challenge. They get points as rewards for the actions they took to save energy.

- Using a clothesline instead of a dryer = **45 points**
- Turning off the TV when not watching = **10 points**
- Turning off the computer when not in use = **18 points**
- Turning off lights when not in use = **32 points**
- Donating used clothing = **15 points**

Solve the math problems to calculate the total points earned by each of them.

Emma's Energy Saving Actions:

- Donating used clothes = points
- Turning off the TV when not watching = points
- Total points earned by Emma = + =

Ethan's Energy Saving Actions:

- Using a clothesline instead of a dryer = points
- Turning off lights when not in use = points
- Total points earned by Ethan = + =

Olivia's Energy Saving Actions:

- Turning off the computer when done = points
- Turning off the TV when not watching = points
- Total points earned by Olivia = + =

Who earned most points by saving energy? Circle your answer.

Emma

Olivia

Ethan

SAVE THE WATER

Solve the word problems below. Show your work.

1. Tim uses **4** cups of water to brush his teeth in the morning and **3** cups of water in the evening. **How many cups of water does he use in a day?**

Morning



Evening



If Tim decides to reduce the water usage to 2 cups each time he brushes his teeth, how **much water will he save in a day?**

Show your work.

2. Sarah waters her plants **3 days a week**. She uses **50** liters of water in the morning and **35** liters of water in the evening. How much water does she use in **total during the week?**

Fill in the blanks.

Day 1 -

morning **50** liters

evening liters

Day 2 -

morning liters

evening liters

Day 3 -

morning liters

evening liters

Total water
used = liters

Show your work.

SAVE OUR OCEAN

Ocean pollution happens when the ocean becomes dirty and harmed by things like plastic and trash. This can make sea animals and plants sick and sad. We need to keep the ocean clean and safe by not throwing trash in it.

Circle the things that do not belong in the ocean.



Innovate for the Ocean ECO-ENGINEERS



Technology can help us save Earth! We use it to recycle, save energy, and clean oceans. With robots and gadgets, we protect our earth, making it a better place for everyone.

Imagine you're an amazing inventor!

Draw and color your dream robot that can help clean up the ocean.

A large, empty rectangular box with rounded corners and a green border, intended for drawing a dream robot.

What tasks would your robot be able to do to protect the sea and its creatures?

Four horizontal dashed lines within a green-bordered box, intended for writing the tasks the robot can perform.

How Pollution Hurts Earth

FIND OUT!

Circle all the things that can happen due to pollution.



Health concerns



Planting trees



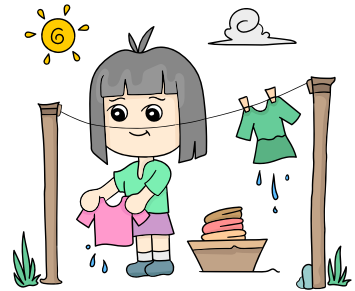
Trash on the streets



Harm to plants and crops



Harm to fish and marine animals



Drying cloths outside insted of dryer

When our environment is polluted, it can cause harm. The air we breathe and the water we drink may become dirty. Animals and plants can get sick, and places we love might not be as beautiful. We can help by keeping our environment clean and safe!

Earth Saver Challenge Time!

Write some actions you can take to protect Earth from pollution.

Pick up trash to keep Earth clean.

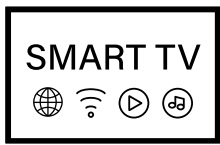
Artificial Intelligence in EVERYDAY LIFE

Artificial Intelligence (AI) is when computers or machines can do things that usually need human thinking, like learning new things, solving problems, or making decisions. It's like having a really smart robot that can help us with different tasks. Here are examples of artificial intelligence.

Color the pictures and draw a line to connect images of AI applications to their descriptions.



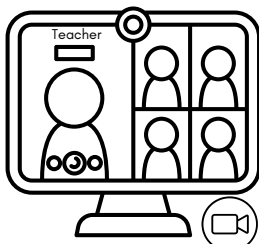
Smartphones



Smart TVs



Gaming Consoles



Virtual Classroom
Tools



Online Shopping
Platforms

Amazon, eBay: AI recommends products based on previous purchases and browsing history.

Roomba: Uses AI to navigate and clean floors efficiently, avoiding obstacles and learning the layout of the home.

Amazon Echo (Alexa), Google Home: These devices use AI to play music, answer questions, control smart home devices, and more.

Xbox, PlayStation: AI in games creates smart opponents and can adapt the game difficulty based on the player's skill level.

Recommendation Systems: AI suggests shows and movies based on what you've watched before. Voice Control: Allows users to change channels, search for shows, and control volume using voice commands

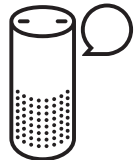
Voice Assistants (e.g., Siri, Google Assistant): These AI assistants can answer questions, set reminders, and control smart home devices.

Spotify, Apple Music: AI curates playlists and recommends songs based on listening habits.

Netflix, Disney+, YouTube: AI recommends videos and shows based on viewing history and preferences.

Zoom, Google Classroom: AI features include virtual backgrounds, real-time translation, and personalized learning recommendations.

Google Maps, Waze: Uses AI to provide real-time traffic updates, suggest the fastest routes, and estimate travel times.



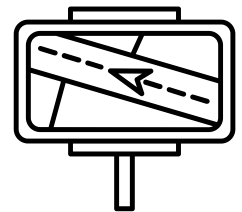
Smart Speakers



Video Streaming
Services



Robot Vacuums



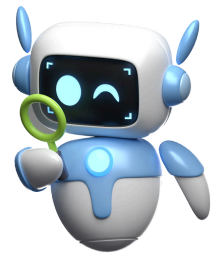
Navigation Systems



Streaming Music
Services

AI Quiz

TRUE OR FALSE

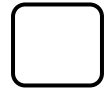


Read the sentences. Mark a box to show if they are True or False.
After completing the activity, flip the page to check your answer.

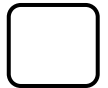
TRUE

FALSE

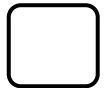
1. AI can learn from data.



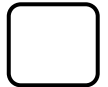
2. AI robots are just like humans.



3. AI can help doctors find illnesses.



4. AI always makes the right decisions.



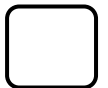
5. AI can only be used in computers.



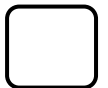
6. AI can help people with disabilities.



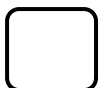
7. All video games use AI.



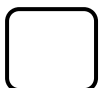
8. AI can be creative and make art.



9. AI is smarter than any human.



10. AI can work without any human help.



Looking for Answers?



**Scan this code to view the
answer key for this activity book**



**A SMART PLEDGE PROGRAM
DESIGNED WITH STUDENTS IN
MIND**

www.textpledge.us

Copyright © 2024 Text Pledge